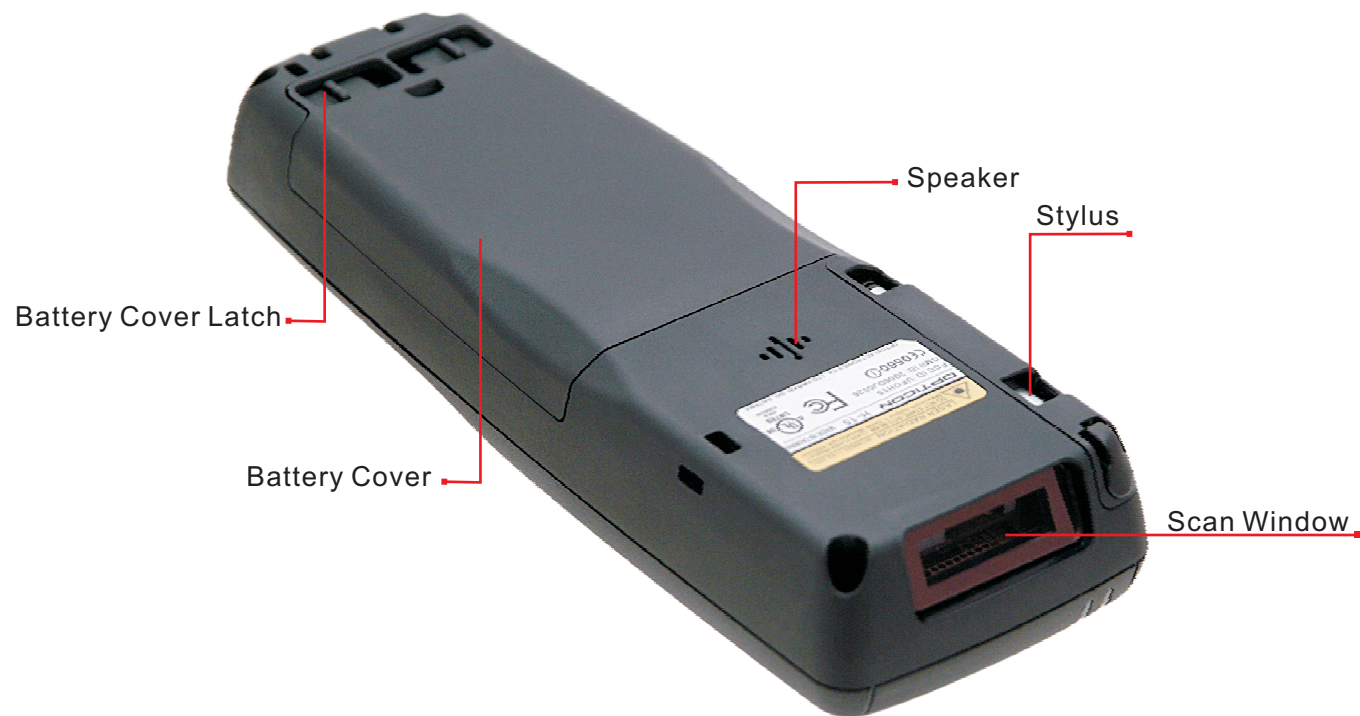


OVERVIEW



BEFORE GETTING STARTED

1. Open the package and check every accessory:



Main Unit

Quick Guide
(Not Shown)



Battery Pack
(2000mAh)



Spring Cord
for Stylus



Stylus



Wrist Strap

⚠ CAUTION:

The device will be powered on when you install the battery pack. Power off the device and charge the batteries for at least 4 hours before starting to use the device. Always charge batteries at 0°C~45°C (32°F~113°F) environment temperature. The charger LED will turn green when battery charging is finished.

2. Installing the Battery Pack

- Slide the two battery cover latches toward the center and lift the battery cover away.
- Insert the battery pack into the battery compartment with the label facing out, and make sure the battery fits into place.
- Place the battery cover by inserting the top first, and then press the bottom in firmly. Slide the battery cover latches outward to secure the cover to the H-15.

3. Connect Cradle to charge the H-15

- Insert the DC connector into the bottom case of the Cradle.
- Insert the power adapter into an AC outlet.
- Put the H-15 into the Cradle to charge.



USING THE KEYPAD

The keypad comprises 24 keys (numeric, functional and Fn) and 1 Navigation/ Scan key.

- Key "SHIFT" toggles between the Numeric and Alpha modes.
- Key "Caps" toggles between uppercase and lowercase characters.
- Press "Fn" to toggle Function Mode.

Special Characters		Special Functions	
Sequence of Keys	Description	Sequence of Keys	Description
SHIFT 0	() \$ €	F1	Internet Explorer
SHIFT	Charge to letters	F2	Microsoft Wordpad
Caps	Charge to upper case	F3	Inbox
SHIFT *	* : ; @	F4	File Explorer
SHIFT 1	Space : \ = %	Q1	User Configurable Key1
		Q2	User Configurable Key2

Special Characters		Special Functions	
Sequence of Keys	Description	Sequence of Keys	Description
Fn	Increase Brightness	Fn 4	Paste
Fn	Decrease Brightness	Fn 5	Delete
Fn	Page Down	Fn 6	- (Minus Sign)
Fn	Page Up	Fn 7	Copy
Fn	ESC	Fn 8	&
Fn	BS	Fn 9	*
Fn	1	Fn 0	€
Fn	2	Fn	Start Menu
Fn	3	Fn	/

BATTERY PRODUCT SAFETY

Lithium-ion Battery Packs might get hot, explode, ignite and/ or cause serious injury in case of misuse.

Please follow the safety warnings listed below:

- Do not throw the battery into fire. Do not expose the battery to high temperatures.
- Do not connect the terminals of the battery pack to each other with any metal object (such as wire).
- Do not carry or store the battery pack together with metal objects.
- Do not pierce the battery pack with nails or drills, strike the battery pack with a hammer, step on the battery pack or otherwise expose it to strong impacts, shocks or excessive force.
- Do not solder directly onto the battery pack.
- Do not expose the battery pack to liquid or allow the battery contacts to become wet.
- Do not disassemble or modify the battery pack. The battery pack contains safety and protection measures, which, if damaged, may cause the battery pack to generate heat, explode or ignite.
- Do not discharge the batteries outside the H-15. Do not use the battery in another device than the H-15 or its battery charger. Otherwise, the battery pack can be damaged or its life expectancy reduced. If such a device causes any abnormal current to flow, it may cause the battery pack to become hot, explode or ignite and cause serious injury.
- In the event the battery pack leaks and the fluid gets into one's eye, do not rub the eye. Rinse well with water and immediately seek medical care.

SETTING DEVICE

1. Initial Boot Up

The initial boot up screen will be displayed when you install the the battery pack for the first time. Do not remove the battery pack when the system is booting.



2. Calibrating Touchscreen

This calibration is already done by the manufacturer. If you want to calibrate the touch screen again, please tap "Start" --- "Settings" --- "Control Panel" --- "Stylus" --- "Calibration" --- "Recalibrate", then hold the stylus and press on the center of the target as it moves around the screen.

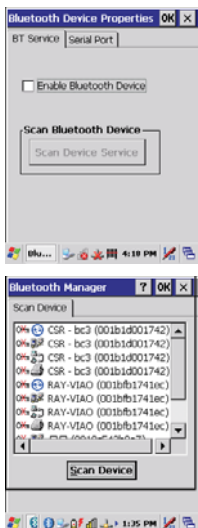
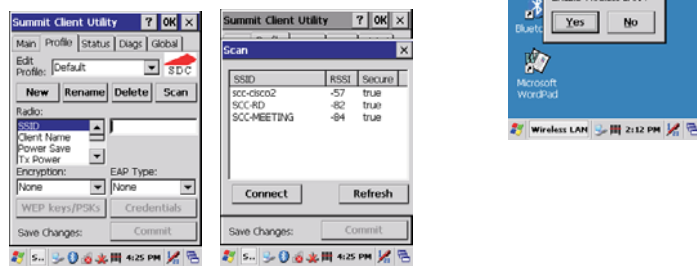
CAUTION:

Be sure to use the supplied stylus or plastic-tipped pens for the touch screen display. Don't use pencils, pens or any sharp objects on the touch screen display.

3. Setting Up Wireless LAN for Summit

- 1) Enable Wireless LAN by clicking on the WLAN icon on the main screen.
- 2) Wait until the SCU icon appears on the task bar and then click on it to start the "Summit Client Utility".
- 3) In the Profile tab, tap the Scan button to connect/refresh the network.
- 4) Select a network, tap the Connect button or double tap it to create a new profile SSID.
- 5) Set the AP, then press the Connect button to connect it.

Note: Availability depends on H-15 model.



4. Bluetooth Device Properties

- 1) Press "Start"---"Programs" -- "Bluetooth Device Properties" to enable the Bluetooth device.
- 2) Wait for 20 seconds in order to initialize the Bluetooth hardware correctly.
- 3) Press the Scan Device button to search for Bluetooth devices.

Note : Availability depends on H-15 model.

5. Brightness Setting

The device is equipped with backlight for both sunlight-readable LCD display and keypad. To adjust the LCD backlight brightness, press the "Fn" key and then press navigation key ">" or "<" to adjust display brightness. Or Press "Start"---"Settings"---"Control Panel" --- "Control Center" "Brightness" to set both LCD and keypad brightness.

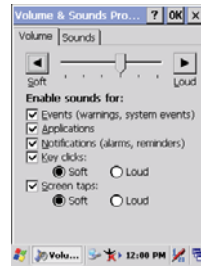


6. Volume Adjustment

- 1) Press "Start"---"Settings"---"Control Panel" -- "Volume & Sounds".
- 2) Adjust the volume bar to meet your demand.

Note:

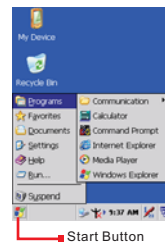
To mute the sound, press the "Fn" key and then press "ESC" key to turn off and on the sound.



USING THE APPLICATIONS

1. Execute an Application

Tap an application icon on the desktop, or tap "Start"---"Programs". Select one of the applications.



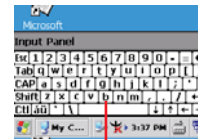
2. Close an Application

Tap the "X" to close the application.



3. Using the Software Input Panel

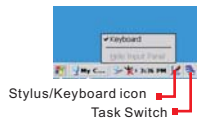
- 1) Tap the "Stylus" icon on the task bar.
- 2) Tap the "Keyboard" icon.
- 3) When the Software Input Panel appears, input characters with the Stylus.



4. Task Switch

Win CE can execute multiple applications at the same time.

- 1) Press "Task Switch" icon in the task bar.
 - 2) Select the task you want in the task menu.
- You can use this to bring the selected application to the foreground. It does not close the other applications.



BAR CODE READING

CAUTION:

Remove the protective film from the scan window before use.

1. Start your application
2. Aim the scan window at the bar code
3. Press the scan key.
4. Aiming :

1D laser: aim the red laser beam on the center of the bar code
Bar codes can be read from 50 to 650 mm distance.



Good scanning positions



Bad scanning positions



5. Check the bar code reading result

You can verify the result of the bar code reading in your application, by beep sound(s) or the LED indicator.

USING PERIPHERALS

1. Using a microSD Card

- 1) Remove the battery cover .
- 2) Remove the Battery Pack.
- 3) Insert a correctly oriented card.

Note: To remove a microSD card, follow the "Open" and "Lock" direction to pull out the card.

The microSD slot supports memory cards only. It does not support SD I/O peripherals.



2. USB Connection

Connect to the Cradle to synchronize data with a computer.

RESETTING DEVICE

1. Warm Reset

- 1) If an application hangs, initiate a Warm Reset to terminate the application.
- 2) The Warm Reset will close all applications and clear the working RAM, but all files will be preserved.
- 3) To perform a Warm Reset, press "F1" and "F4" keys simultaneously.

2. Cold Reset

CAUTION:

Try Warm Reset before you initiate a Cold Reset. All applications will be closed, and working RAM as well as all files will be cleared if you initiate the Cold Reset. It is strongly recommended to back up your files to Flash ROM, Flash Card or PC.

- 1) You can use Cold Reset to initialize the device if the WinCE.NET OS locks up or in case a Warm Reset has no effect.
- 2) To perform a Cold Reset, press "Power", "F1" and "F4" keys simultaneously.
- 3) The device will boot up after the Cold Reset.

COMMUNICATION
MANAGEMENT
HUMANIZATION



User and Product Safety

- Do not stare into the laser beam directly or shine it into a person's eyes.
- Never use strong pressure onto the screen or subject it to severe impact, as the LCD panel could become cracked and possibly cause personal injury. If the LCD panel is broken, do not touch the liquid inside, because the liquid irritates the skin.
- Use only the original approved AC adapter with the H-15. Use of an unapproved AC Adapter could result in electrical problems, or even cause a fire or electrical shock to the user.
- Do not disassemble the H-15. Servicing should be done by authorized suppliers only. If the device or accessories get damaged due to wrong handling or unauthorized repair, warranty is void. In case the warranty seals are broken, warranty is void, too.
- Make regular backups of all important data.
- Under no circumstance will Manufacturer be liable for any direct, indirect, consequential or incidental damages arising out of use or inability to use both the hardware and software and/or any data loss, even if Manufacturer has been informed about the possibility of such damages.



Do not throw this product in the home waste bin.



H-15